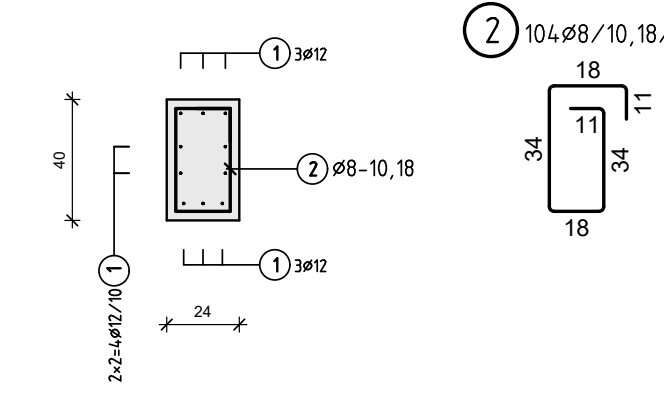
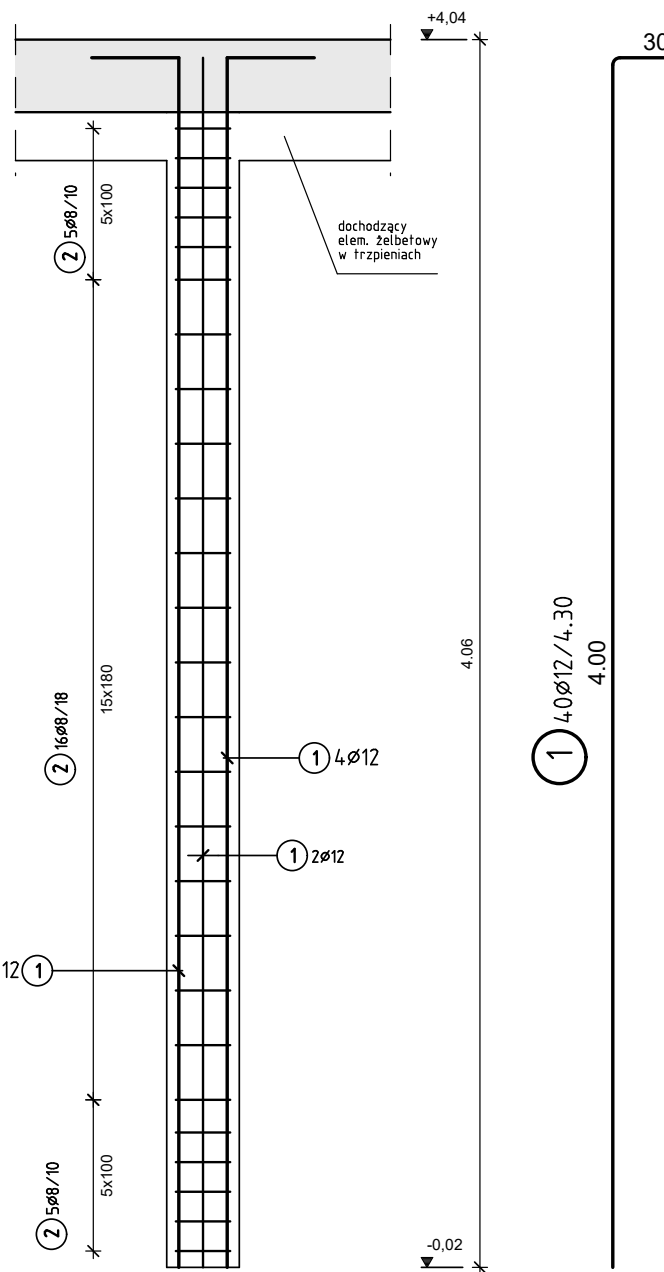


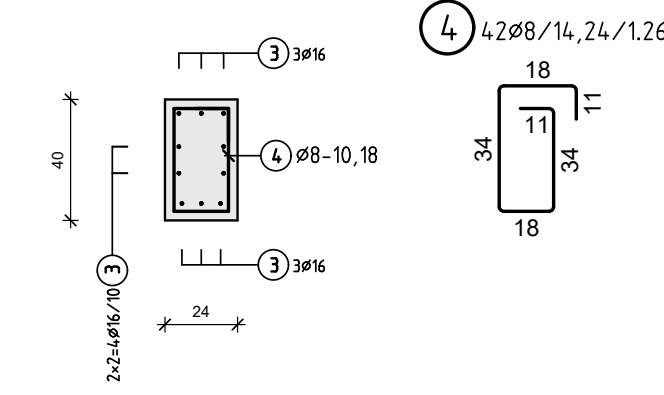
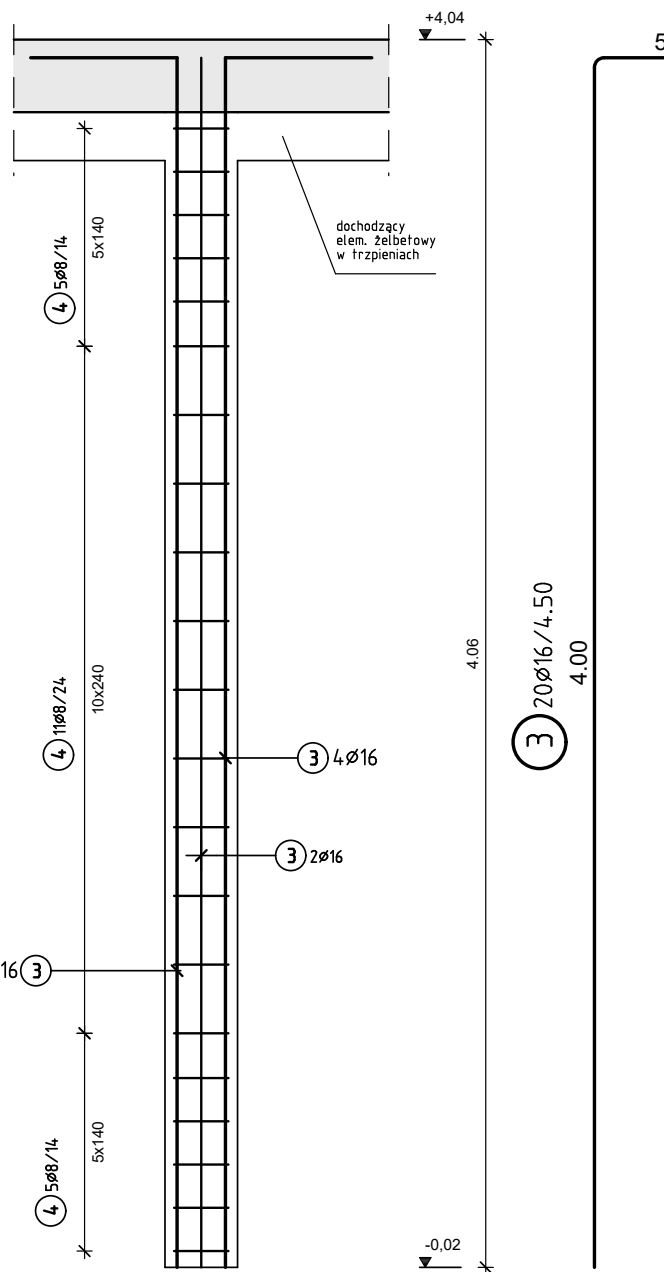
## Tr-18 (24x40)

szt. 4



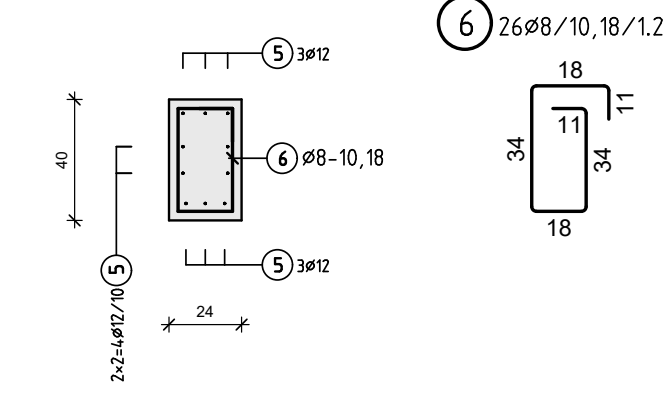
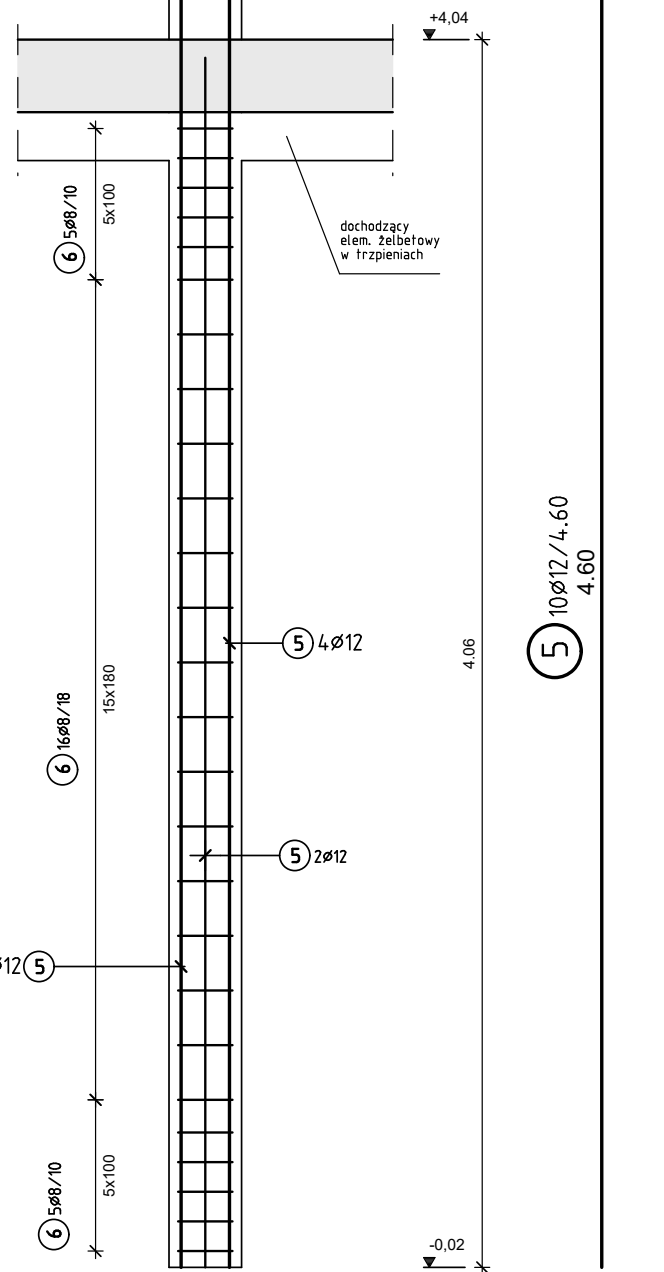
## Tr-18.1 (24x40)

szt. 2



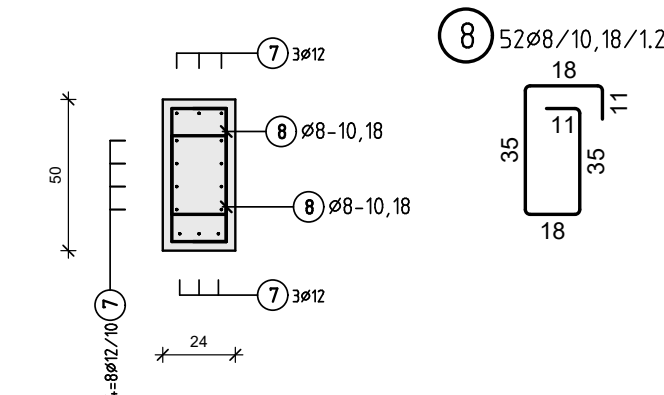
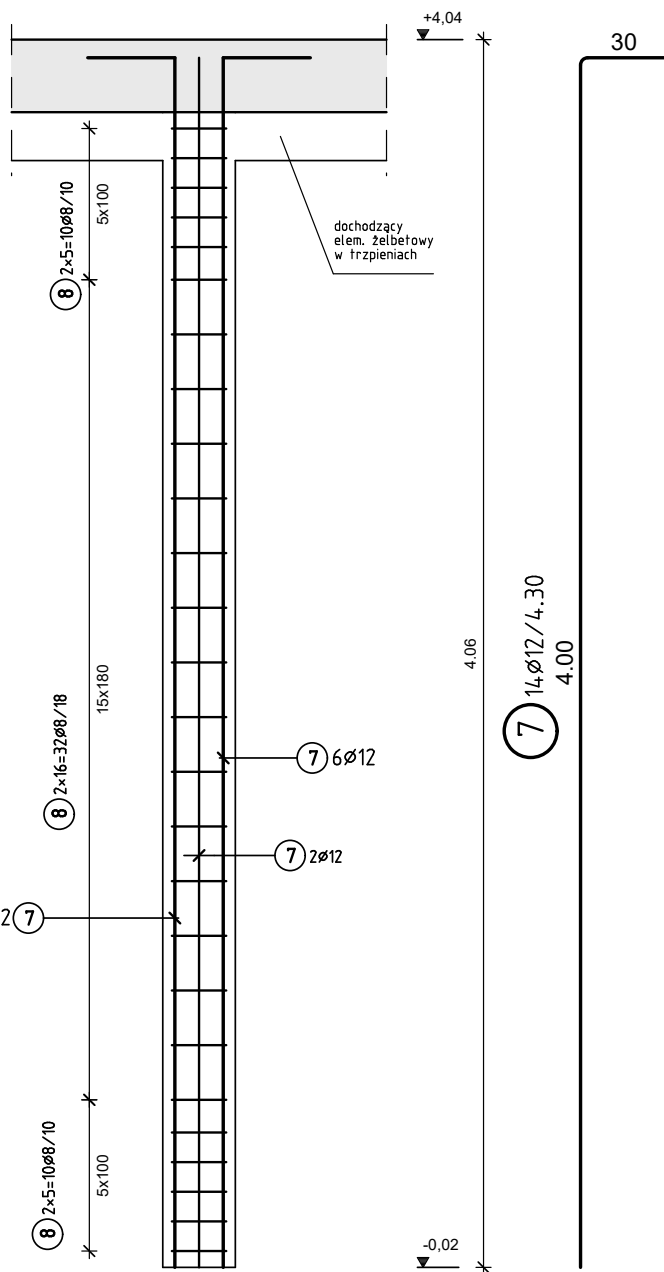
## Tr-18.2 (24x40)

szt. 1



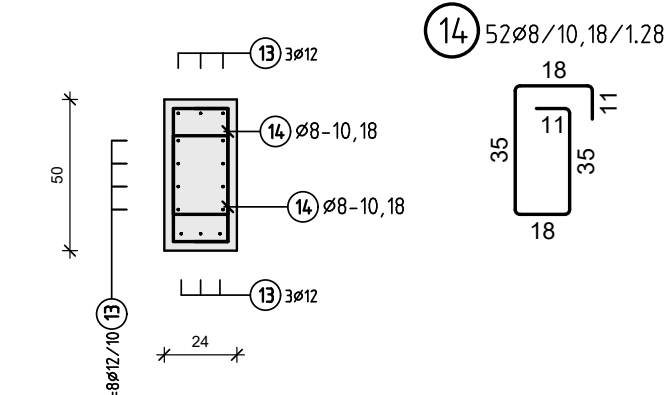
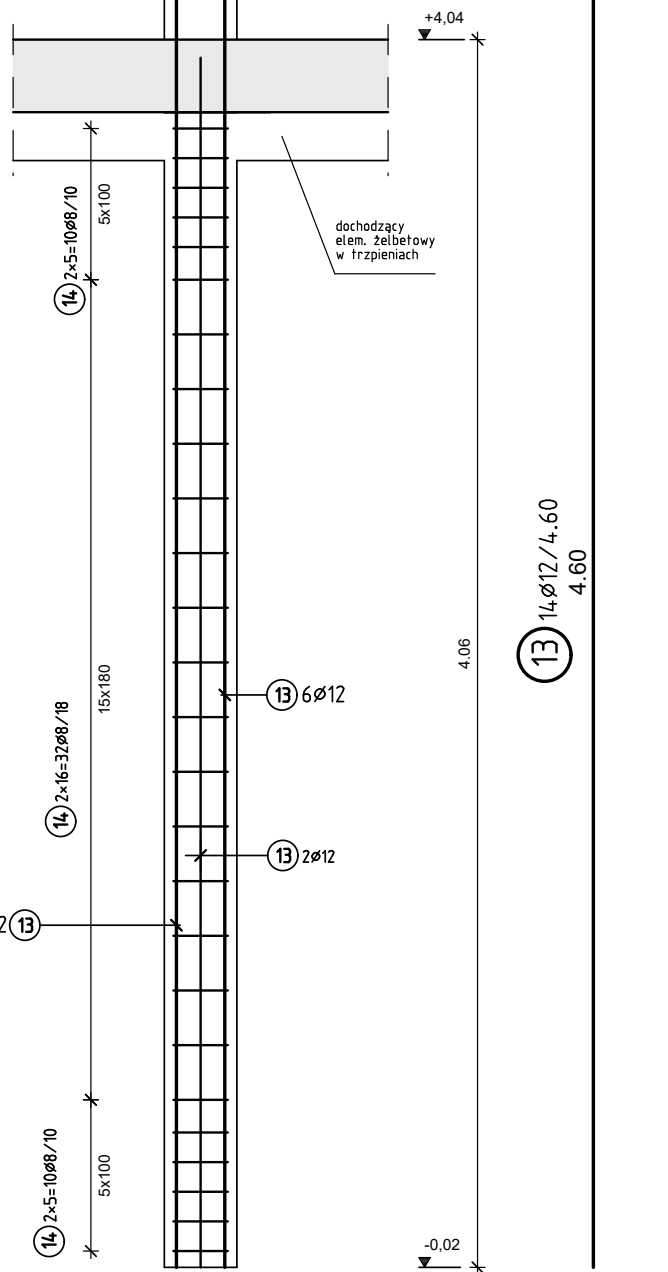
## Tr-19 (24x50)

szt. 1



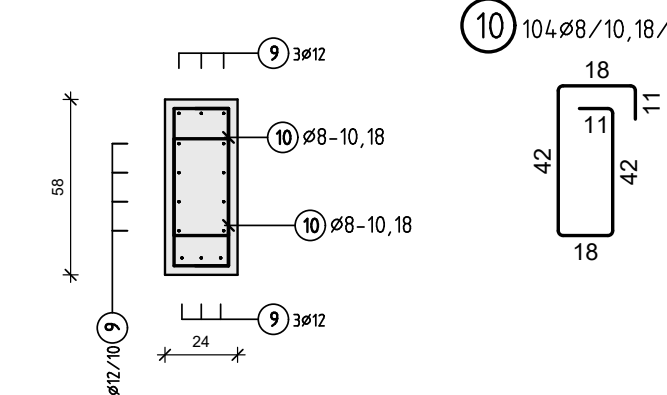
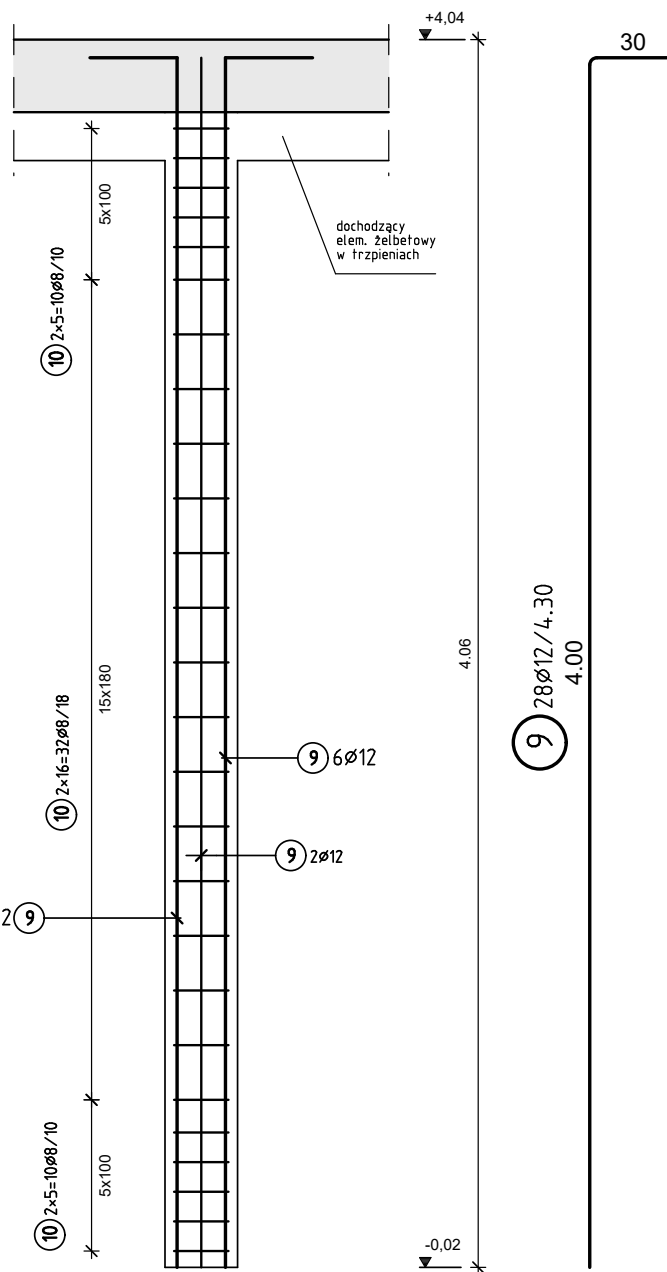
## Tr-19.1 (24x50)

szt. 1



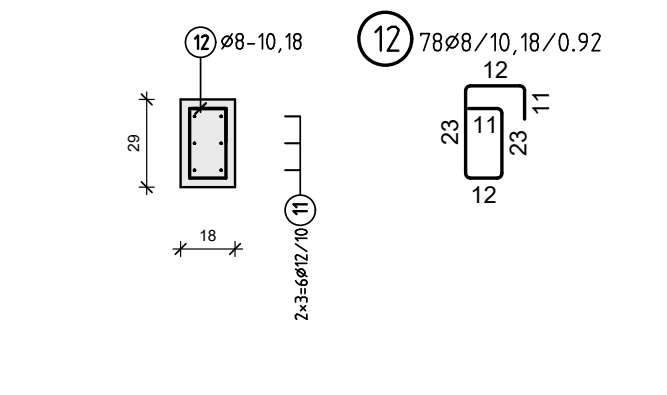
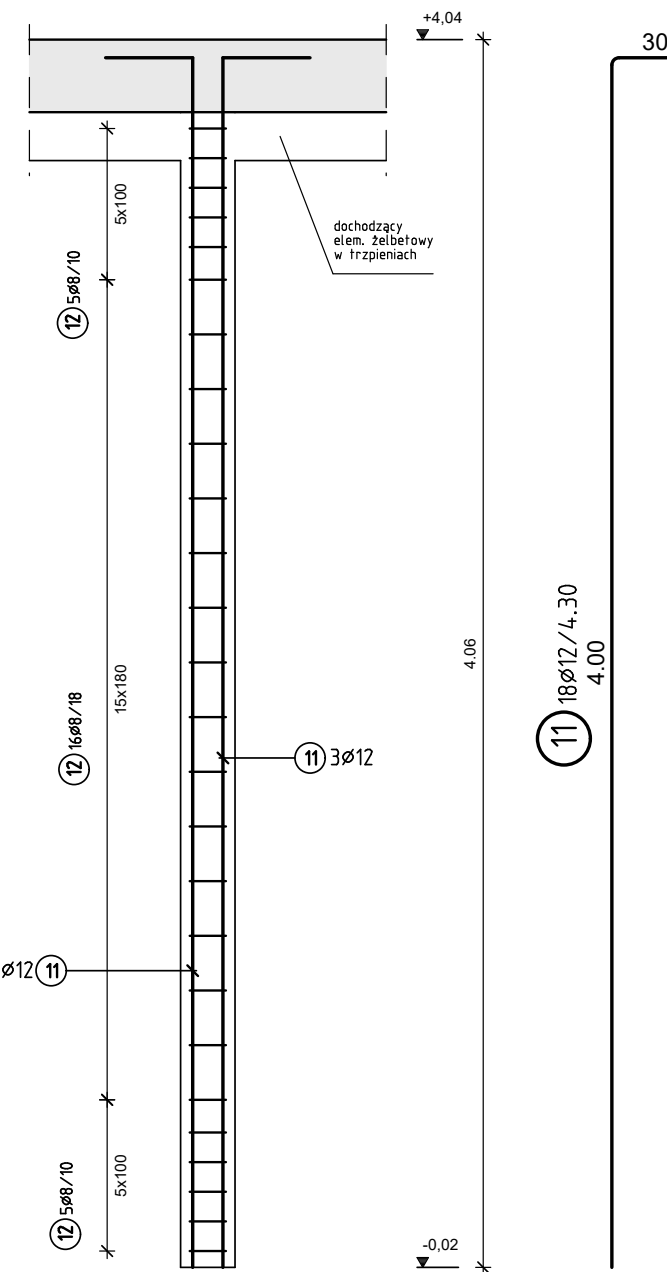
## Tr-21 (24x58)

szt. 2



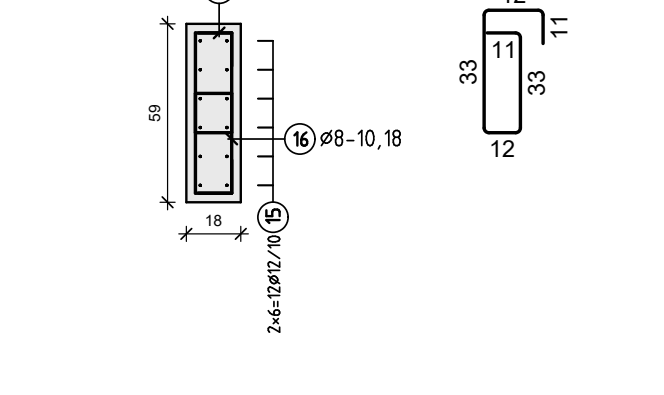
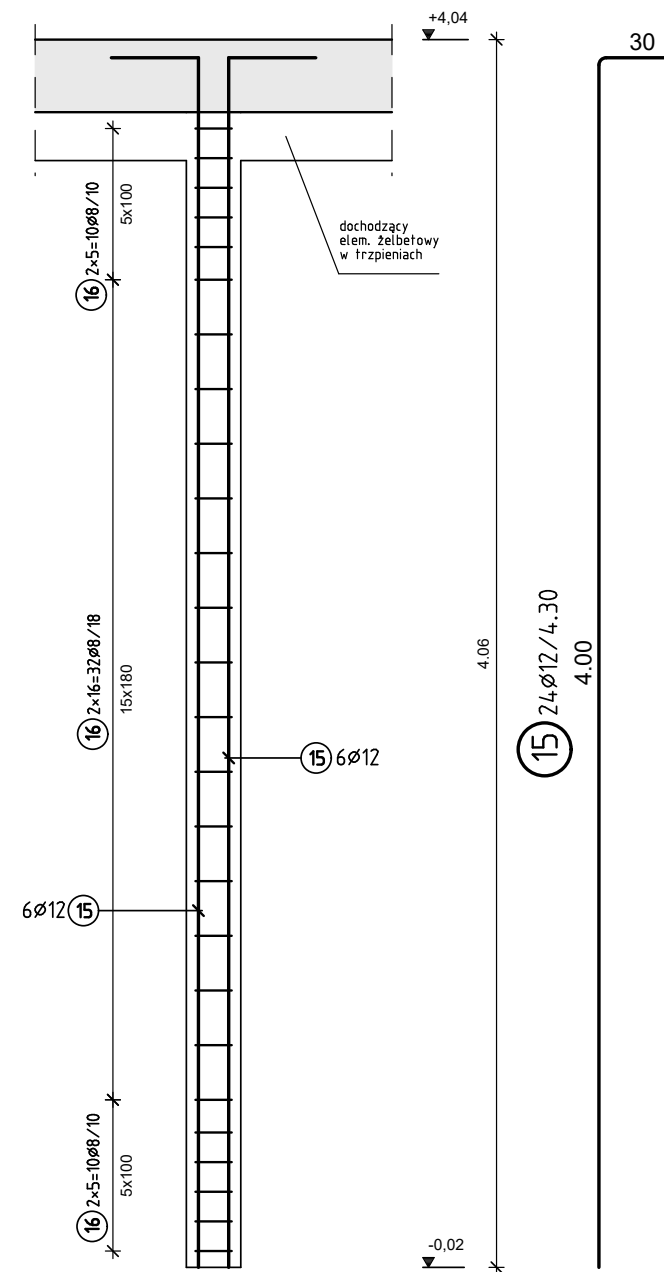
## Tr-22 (18x29)

szt. 3



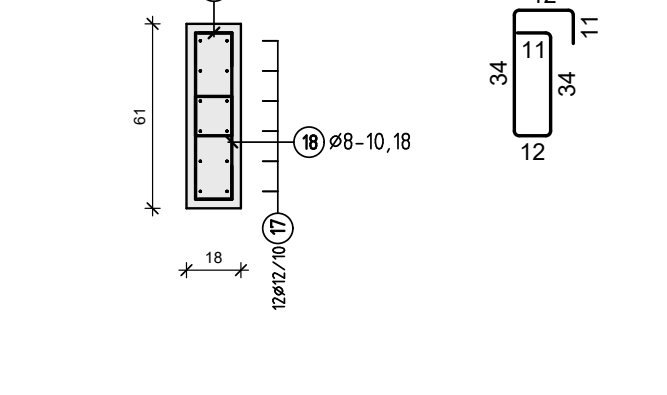
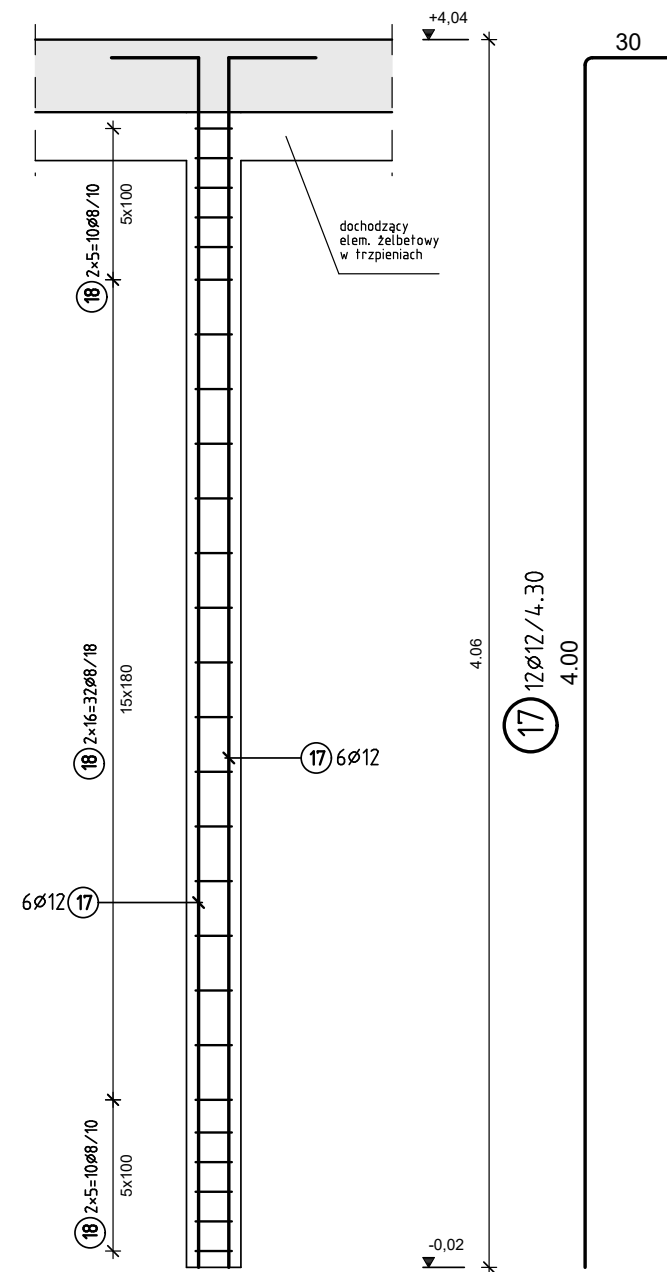
## Tr-23 (18x59)

szt. 2



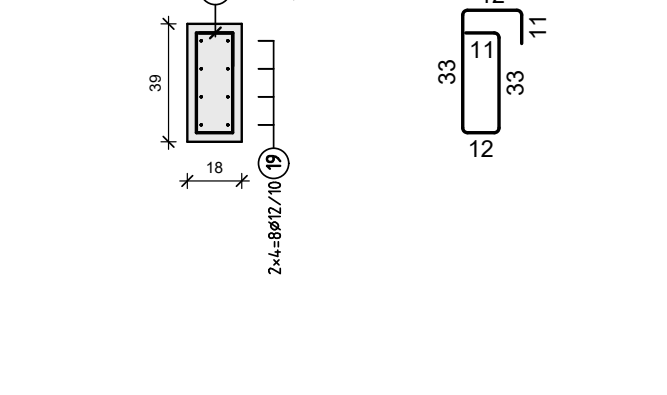
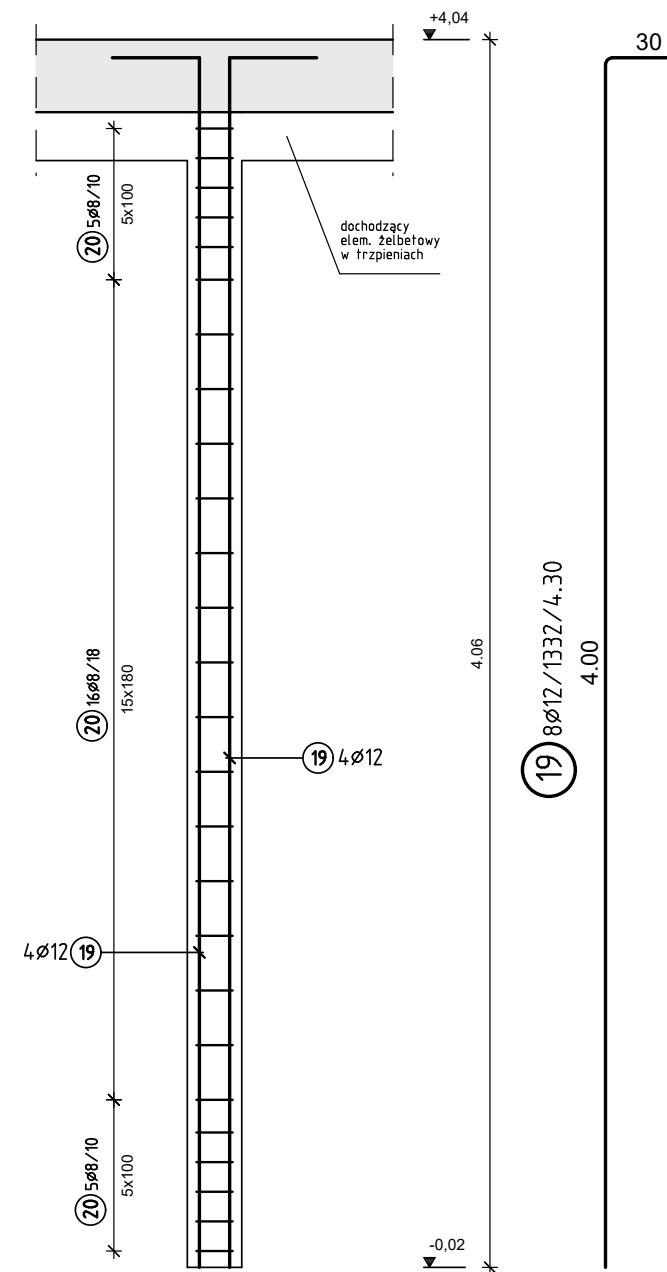
## Tr-24 (18x61)

szt. 1



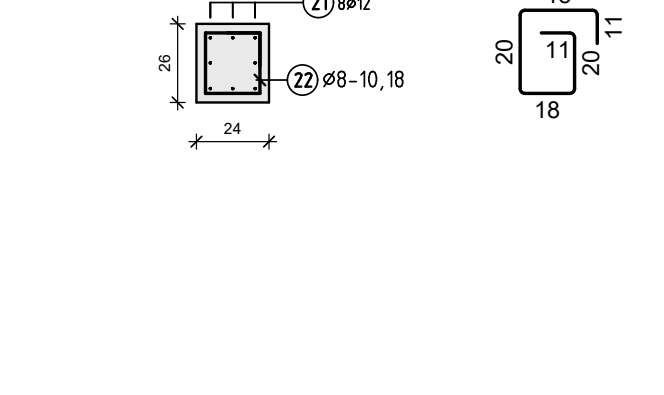
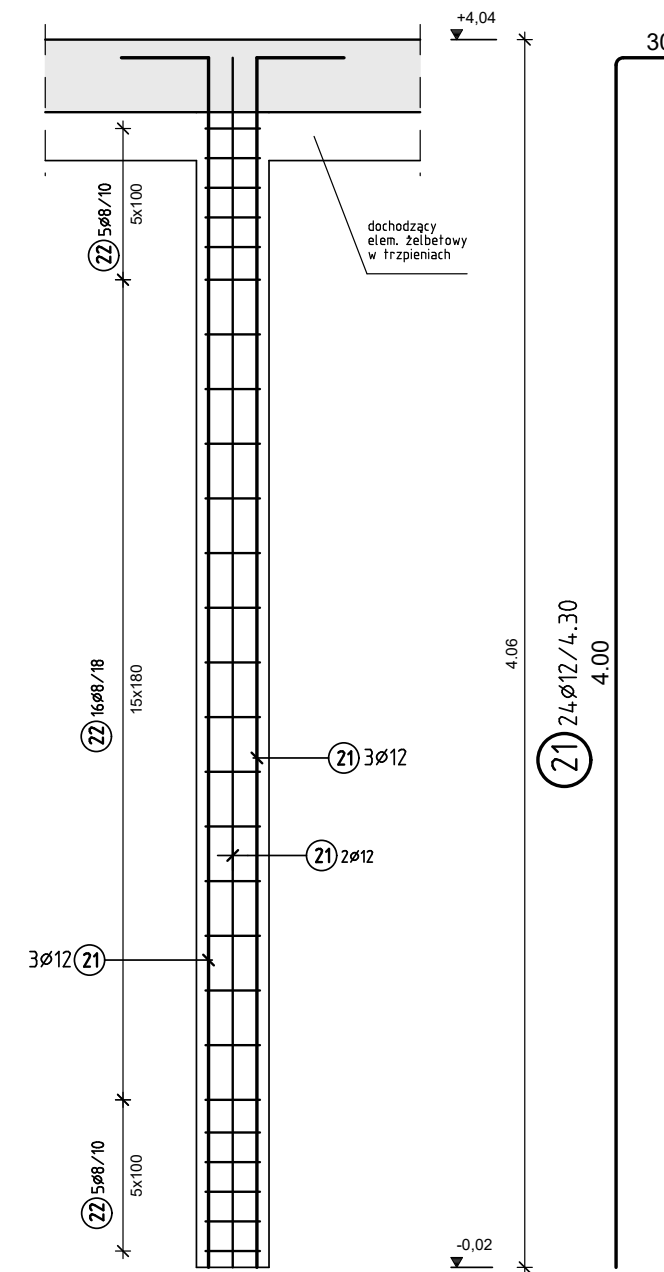
## Tr-25 (18x39)

szt. 1



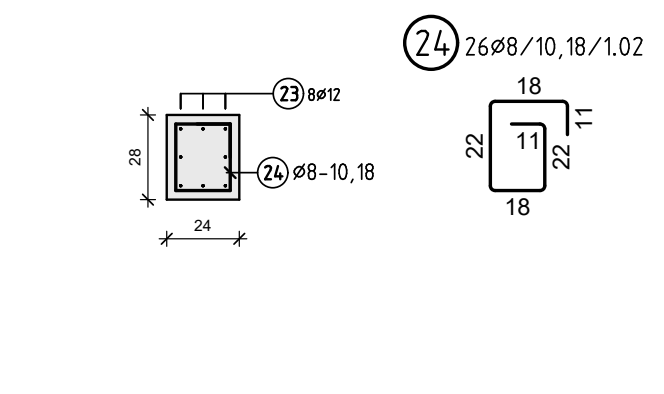
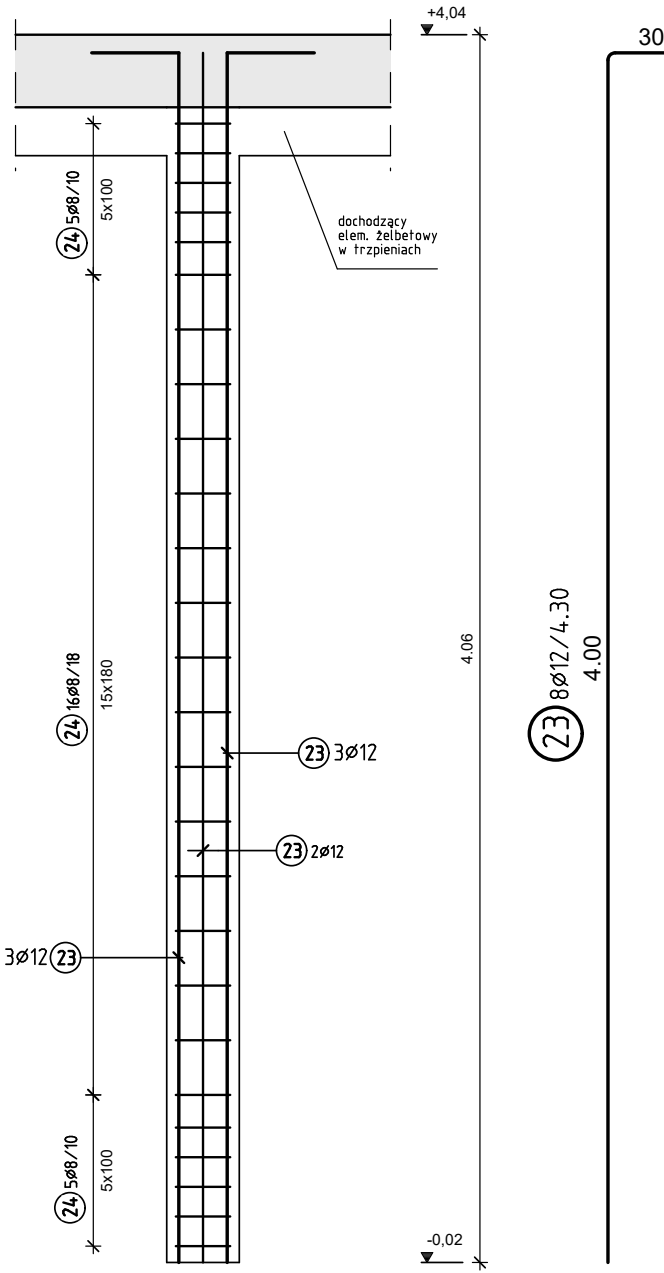
## Tr-26 (24x26)

szt. 3



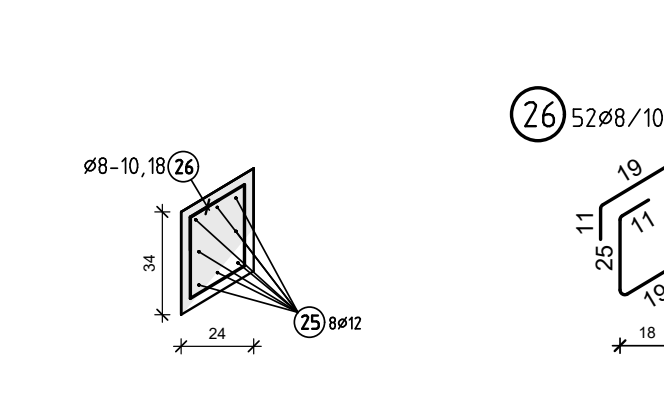
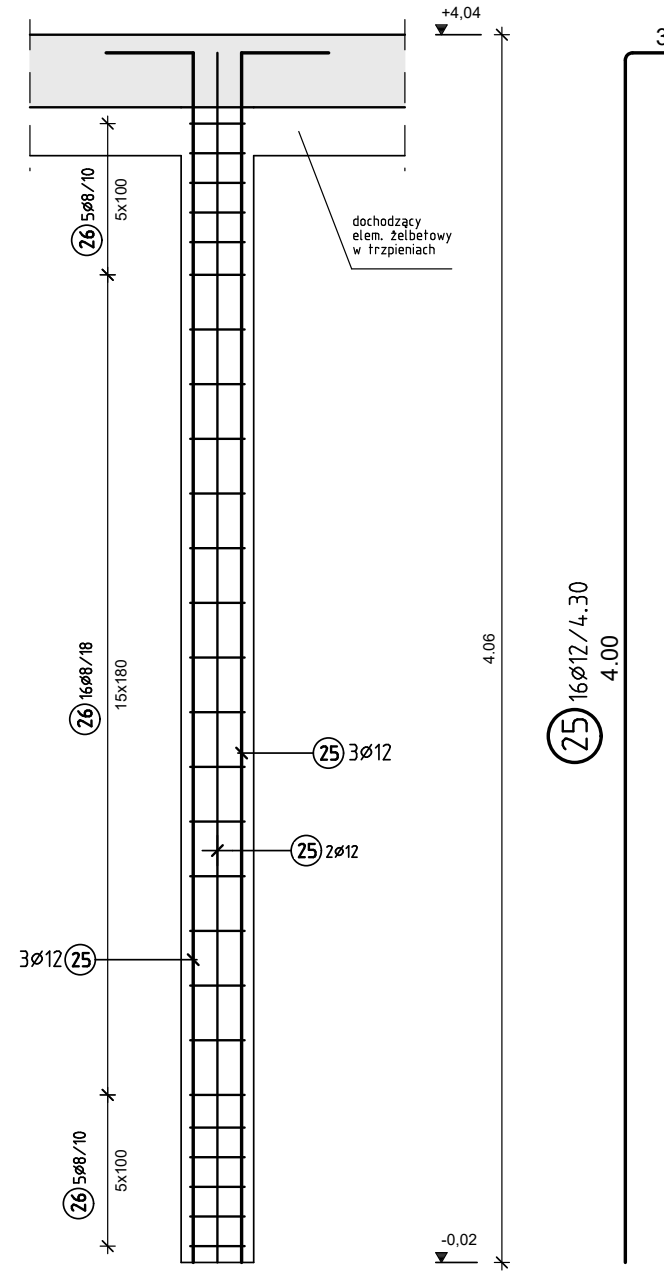
## Tr-27 (24x28)

szt. 1



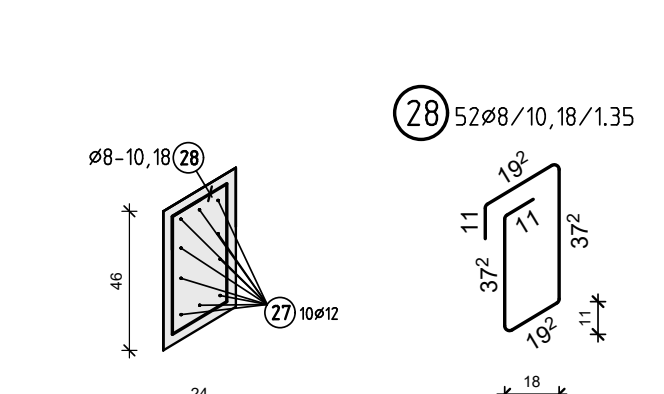
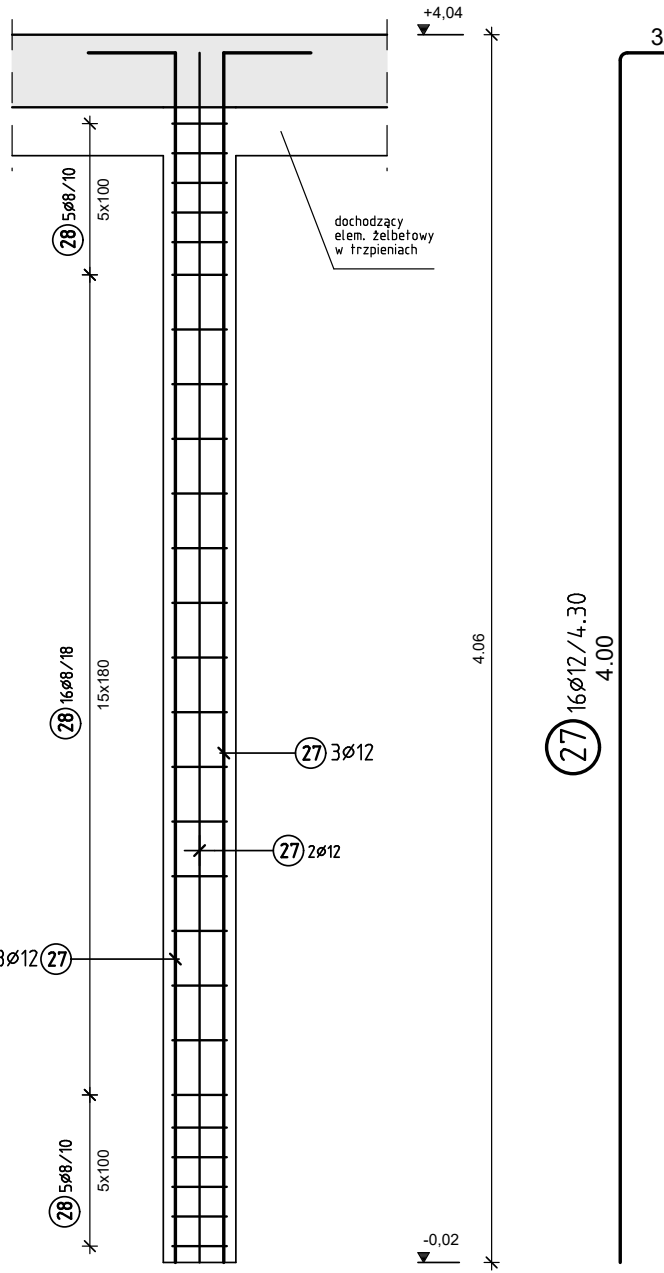
## Tr-28 (24x34)

szt. 2



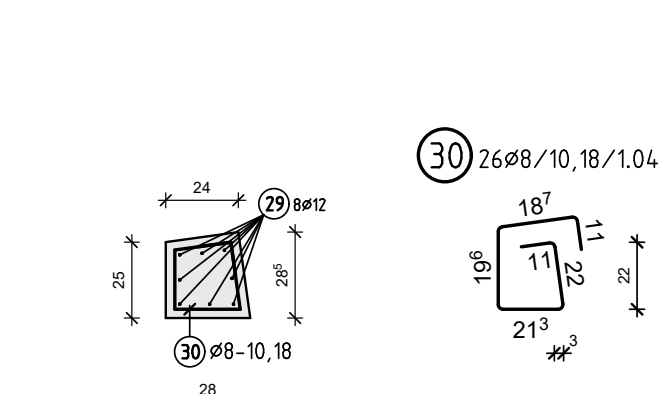
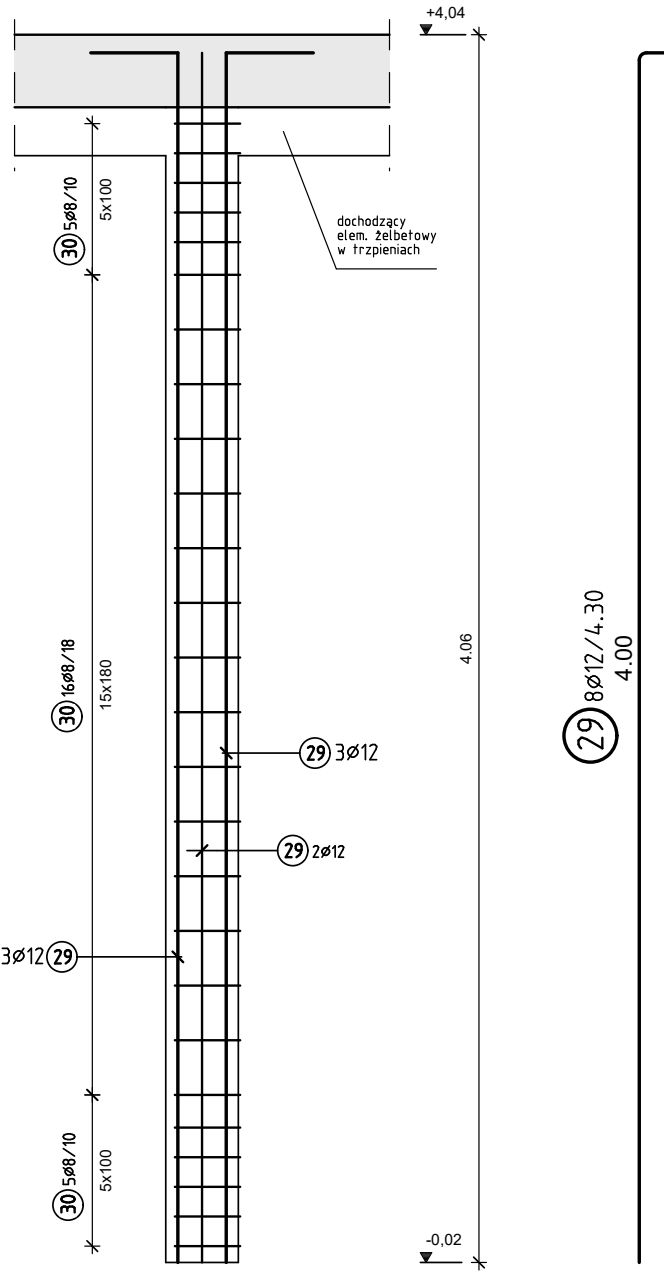
## Tr-29 (24x46)

szt. 2



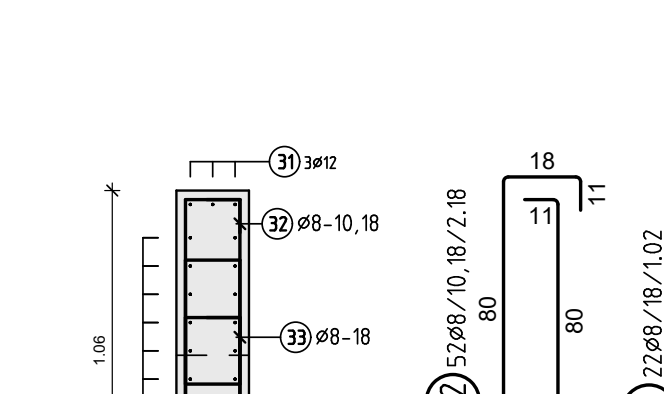
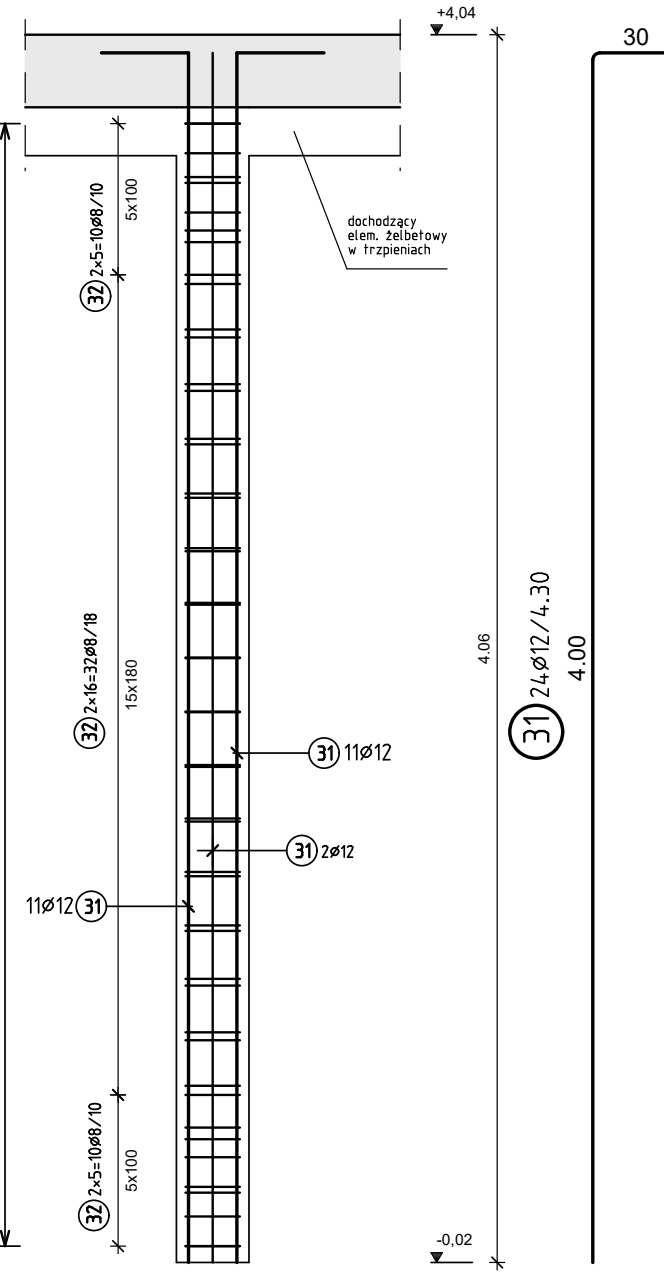
## Tr-30 (24x28)

szt. 1



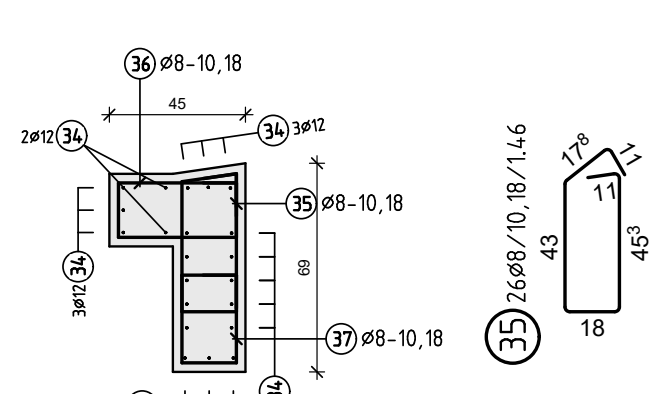
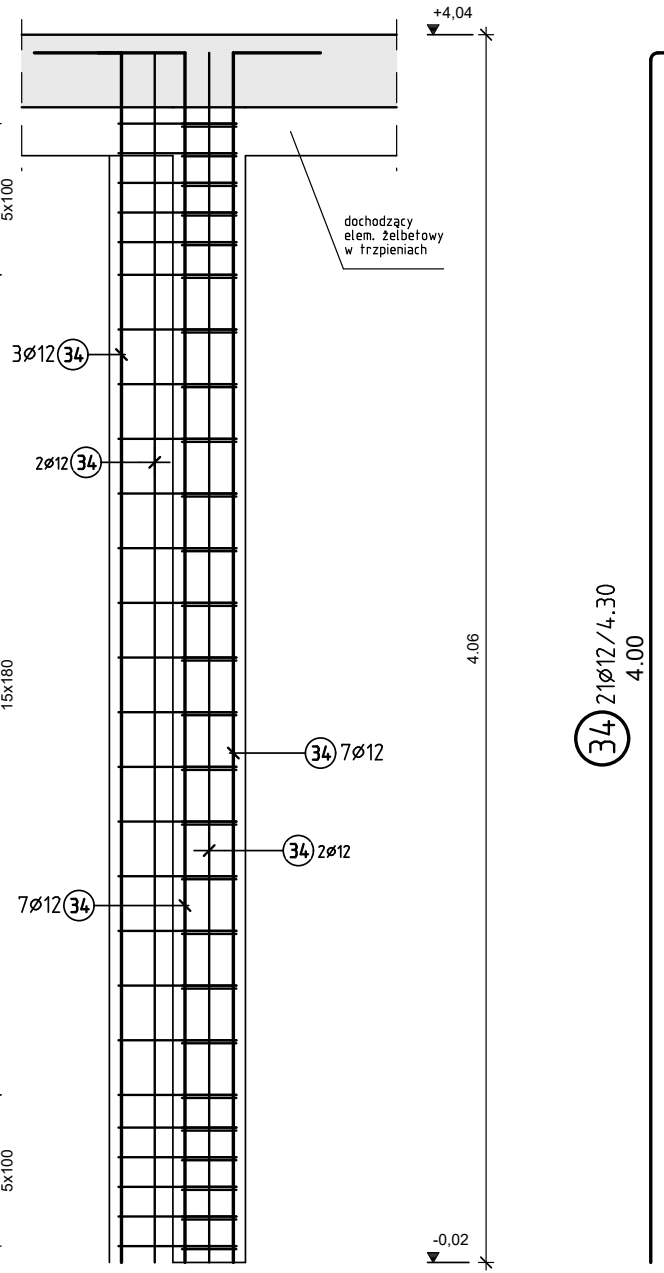
## Tr-31 (24x106)

szt. 1



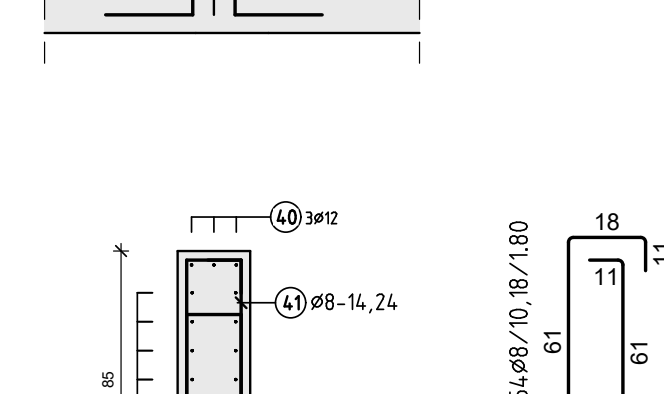
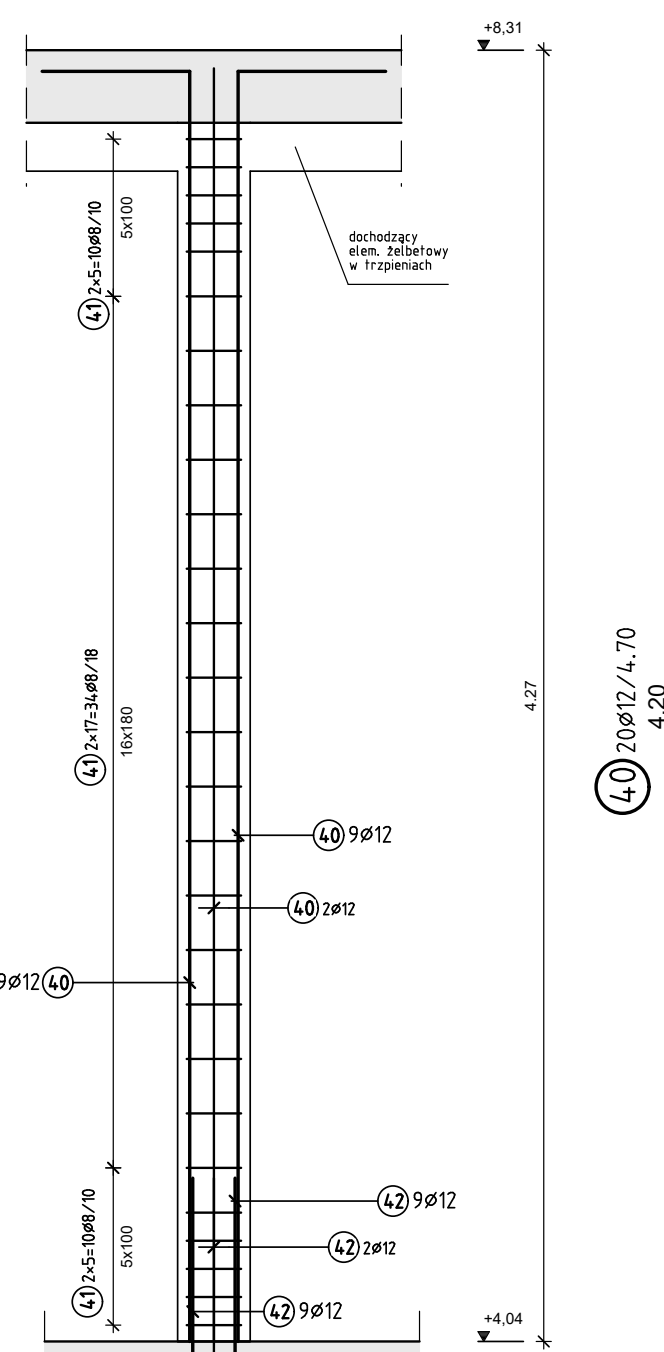
## Tr-32 (24x69)

szt. 1



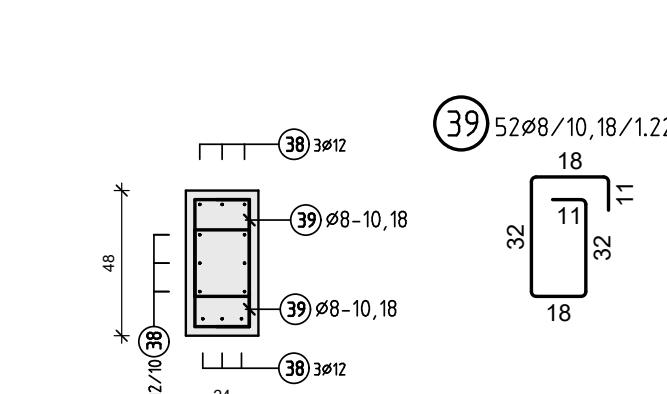
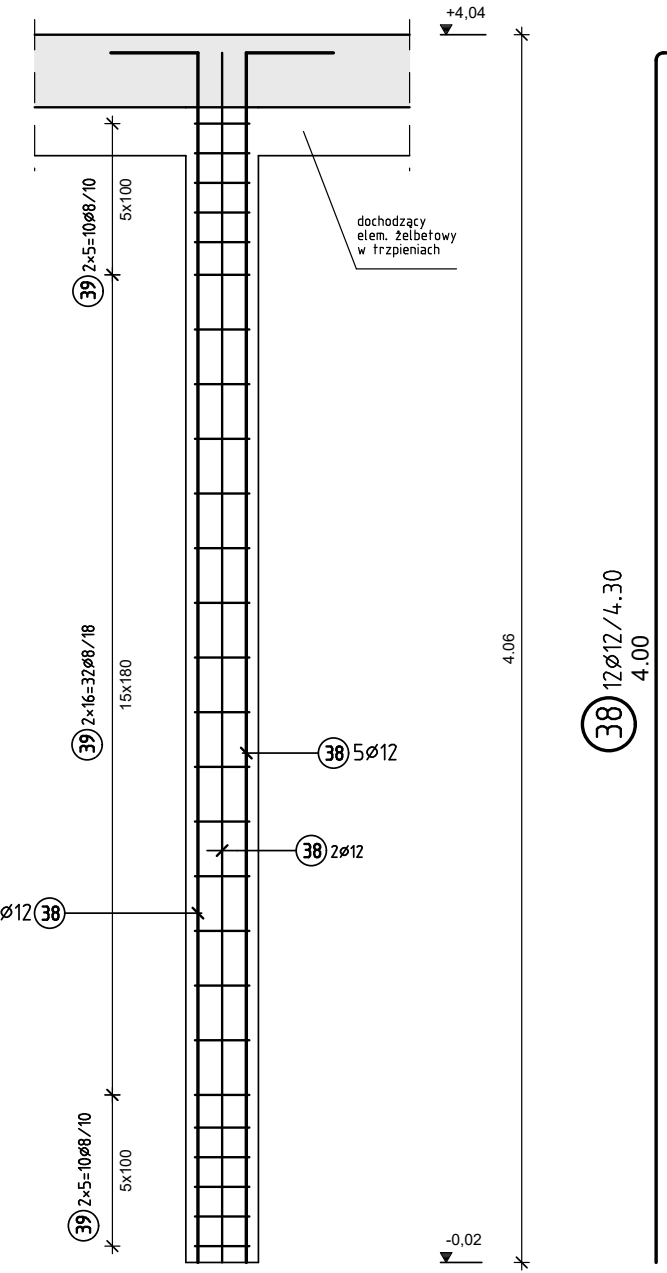
## Tr-33 (24x85)

szt. 1



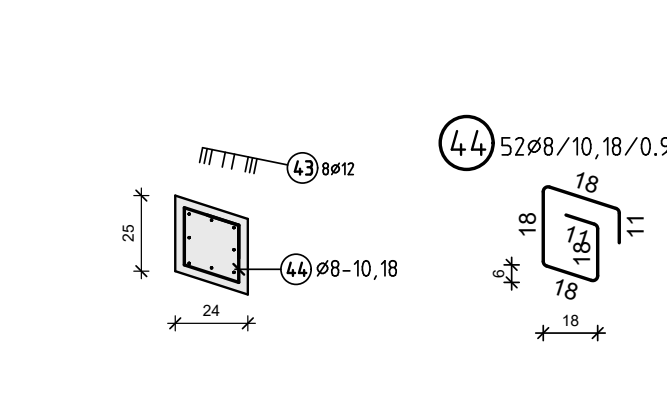
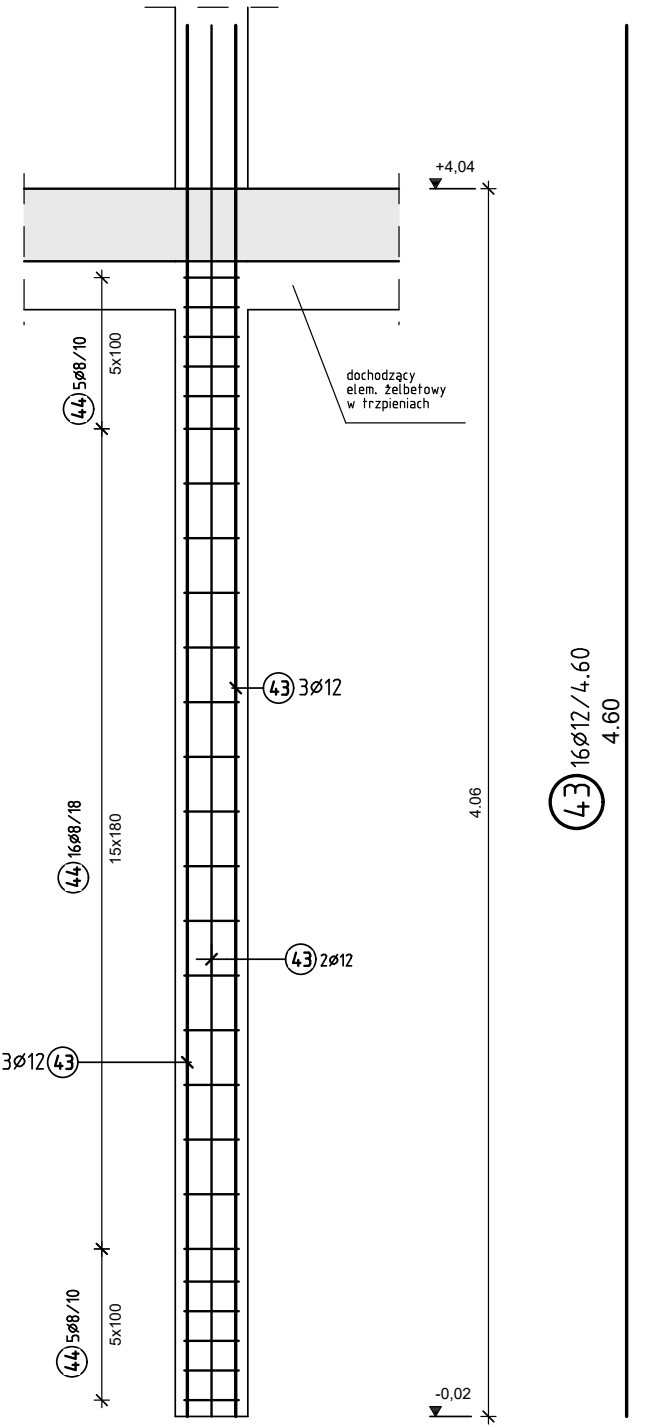
## Tr-36 (24x48)

szt. 1

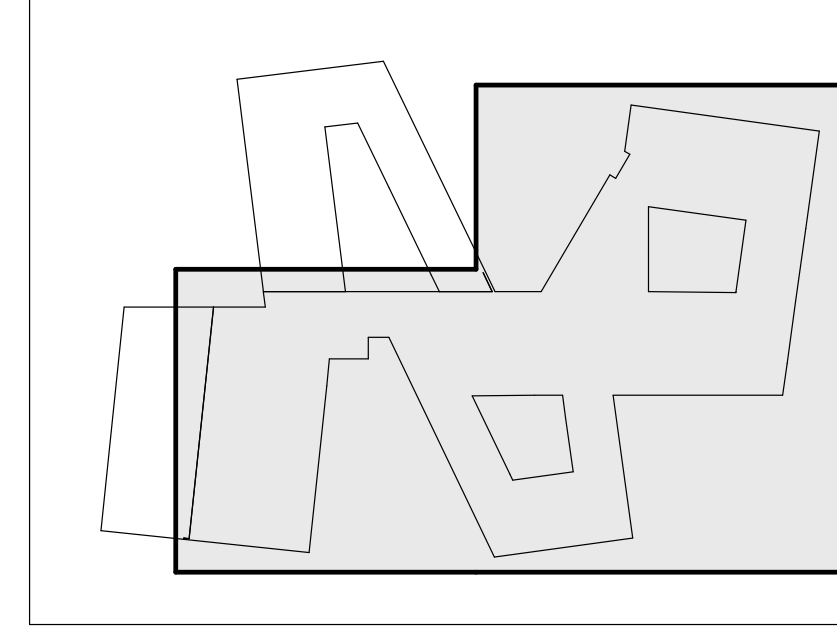


## Tr-37 (24x24)

szt. 2



## SCHEMAT ETAPOWANIA



## UWAGI

- PROJEKT MOZE BYC REALIZOWANY WYKLACZNIE Z PROJEKTAMI BRANŻOWYMI W RAMACH PROJEKTOWANIA NALAZY POWINNOBYC BYC PROJEKTOWANIE.
- MATERIAŁY I LITERY DO WYKONANIA POMIARU POSIADAC CERTYFIKATY LUB ATESTY DOPUSZCZAJĄCE DO STOSOWANIA W BUDOWNICTWIE.
- ROBOTY BUDOWLANE MUSZA BYC WYKONANE ZGODNIE ZE SZKICEM BUDOWLANYM.
- WSZYSTKIE WYMAGANIA I ROZKAZY NALEZY SPRAWDZAĆ NA BUDOWIE, A SZKICEM NIE MOŻE BYĆ WYKONANY PRACE PROJEKTOWANIA ARCHYTEKTONICZNO-BUDOWLANEGO I PROJEKTOWANIA OPRACOWANIE BRANŻOWE W STANIE ETAPOWANIA NALAZY WYKONANIE ZGODNIE Z PROJEKTEM PROJEKTANTÓW BRANŻOWYCH.
- PODSTAWNE NIEZBĘDNE KARTY TECHNICZNE NALAZY WYKONANE ZGODNIE ZE SZKICEM BUDOWLANYM OPRACOWANIE BRANŻOWE.
- WSZYSTKIE ROBOTY BUDOWLANO-MONTAŻOWE, A TAKŻE ODBÓR WYKONANYCH ROBÓT, MUSZA BYĆ WYKONANE ZGODNIE Z PROJEKTEM PROJEKTANTÓW.
- OPRACOWANIE WSZYSTKICH PROJEKTÓW ARCHYTEKTONICZNO-BUDOWLANO-MONTAŻOWYCH MUSZA BYĆ WYKONANE ZGODNIE Z PROJEKTEM PROJEKTANTÓW.
- RYSLINIE KONSTRUKCYJNE PRZEDKŁADANE W NIEZBĘDNYM STANIE, AŻ DO WYKONANIA PRAC BUDOWLANO-MONTAŻOWYCH, MUSZA BYĆ WYKONANE ZGODNIE Z PROJEKTEM PROJEKTANTÓW.

## MATERIAŁY KONSTRUKCYJNE

STAL - A-IIIN (B500SP)  
BETON C35/45 (B35) C25/30 (B25)  
OTULINA: 30 mm  
KLASA EKSPLOZACJI: XC1  
DOPUSZCZALNE ZARYSOWANIE: 0.3 mm  
POZIOM PORÓWNAWICZ: ±0.00 ±123.20m n.p.m.

B500B				B500B			
Poz.	Ilość	f	Szerokość	Poz.	Ilość	f	Szerokość
1	40	12	4.30	23	8	12	4.30
2	104	8	1.26	24	26	8	1.02
3	20	16	4.30	25	16	12	4.30
4	42	8	1.26	26	52	8	1.10
5	10	12	4.30	27	16	12	4.30
6	26	8	1.26	28	52	8	1.35
7	14	12	4.30	29	8	12	4.30
8	52	8	1.26	30	26	8	1.04
9	28	12	4.30	31	24	12	4.30
10	104	8	1.42	32	52	8	2.15
11	18	12	4.30	33	22	8	1.02
12	78	8	0.92	34	21	12	4.30
13	14	12	4.30	35	26	8	1.45
14	52	8	1.26	36	26	8	1.35
15	24	12	4.30	37	26	8	1.15
16	104	8	1.12	38	12	12	4.30
17	12	12	4.30	39	52	8	1.22
18	52	8	1.14	40	20	12	4.70
19	8	12	4.30	41	54	8	1.80
20	26	8	1.12	42	20	12	1.00
21	24	12	4.30	43	16	12	4.60
22	78	8	0.98	44	52	8	0.94

f (mm)	L (m)	G (kg)	f (mm)	L (m)	G (kg)
8	1403.36	984.742	12	1471.90	1307.047
16	90.00	142.200			
Ciężar całkowity: 2033.989 kg					

B500B				B500B			
Poz.	Ilość	f	Szerokość	Poz.	Ilość	f	Szerokość
1	48	12	4.30	12	4.30	12.00	4
2	154	8	1.35	13	4.30	12.00	4
3	28	12	4.30	14	4.30	12.00	4
4	12	12	4.30	15	4.30	12.00	4
5	12	12	4.30	16	4.30	12.00	4
6	12	12	4.30	17	4.30	12.00	4
7	12	12	4.30	18	4.30	12.00	4
8	12	12	4.30	19	4.30	12.00	4
9	12	12	4.30	20	4.30	12.00	4
10	12	12	4.30	21	4.30	12.00	4
11	12	12	4.30	22	4.30	12.00	4
12	12	12	4.30	23	4.30	12.00	4
13	12	12	4.30	24	4.30	12.00	4
14	12	12	4.30	25	4.30	12.00	4
15	12	12	4.30	26	4.30	12.00	4
16	12	12	4.30	27	4.30	12.00	4
17	12	12	4.30	28	4.30	12.00	4
18	12	12	4.30	29	4.30	12.00	4
19	12	12	4.30	30	4.30	12.00	4
20	12	12	4.30	31	4.30	12.00	4
21	12	12	4.30	32	4.30	12.00	4
22	12	12	4.30	33	4.30	12.00	4
23	12	12	4.30	34	4.30	12.00	4
24	12	12	4.30	35	4.30	12.00	4
25	12	12	4.30	36	4.30	12.00	4
26	12	12	4.30	37	4.30	12.00	4
27	12	12	4.30	38	4.30	12.00	4
28	12	12	4.30	39	4.30	12.00	4
29	12	12	4.30	40	4.30	12.00	4
30	12	12	4.30	41	4.30	12.00	4
31	12	12	4.30	42	4.30	12.00	4
32	12	12	4.30	43	4.30	12.00	4
33	12	12	4.30	44	4.30	12.00	4
34	12	12	4.30	45	4.30	12.00	4
35	12	12	4.30	46	4.30	12.00	4
36	12	12	4.30	47	4.30	12.00	4
37	12	12	4.30	48	4.30	12.00	4
38	12	12	4.30	49	4.30	12.00	4
39	12	12	4.30	50	4.30	12.00	4
40	12	12	4.30	51	4.30	12.00	4
41	12	12	4.30	52	4.30	12.00	4
42	12	12	4.30	53	4.30	12.00	4
43	12	12	4.30	54	4.30	12.00	4
44	12	12	4.30	55	4.30	12.00	4
45	12	12	4.30	56	4.30	12.00	4
46	12	12	4.30	57	4.30	12.00	4
47	12	12	4.30	58	4.30	12.00	4
48	12	12	4.30	59	4.30	12.00	4
49	12	12	4.30	60	4.30	12.00	4
50	12	12	4.30	61	4.30	12.00	4
51	12	12	4.30	62	4.30	12.00	4
52	12	12	4.30	63	4.30	12.00	4
53	12	12	4.30	64	4.30	12.00	4
54	12	12	4.30	65	4.30	12.00	4
55	12	12	4.30	66	4.30	12.00	4
56	12	12	4.30	67	4.30	12.00	4
57	12	12	4.30	68	4.30	12.00	4
58	12	12	4.30	69	4.30	12.00	4
59	12	12	4.30	70	4.30	12.00	4
60	12	12	4.30	71	4.30	12.00	4
61	12	12	4.30	72	4.30	12.00	4